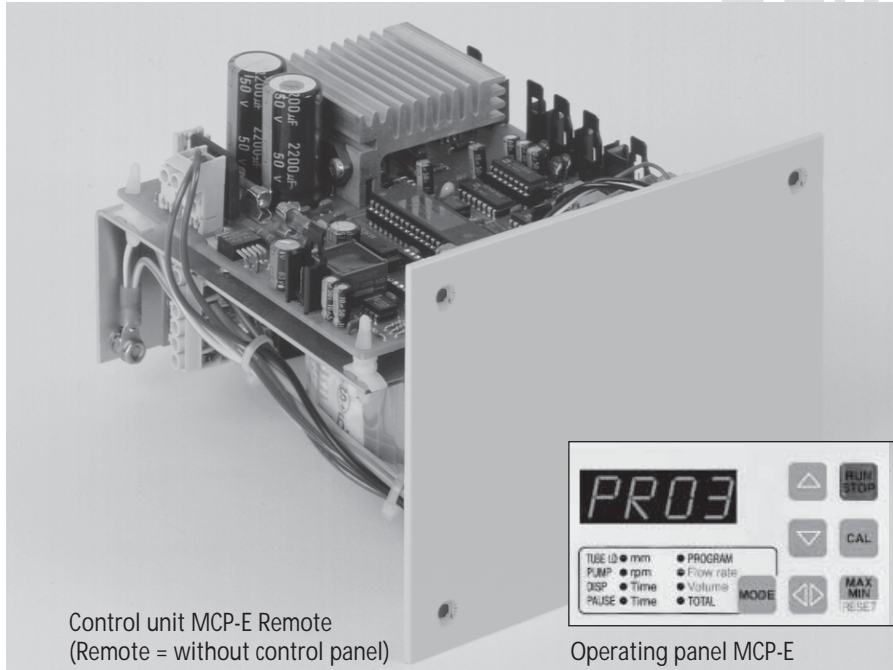
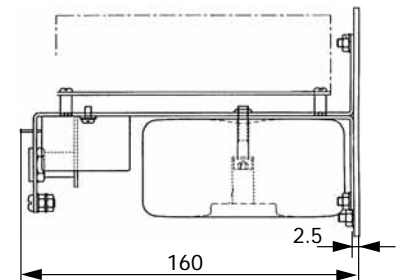
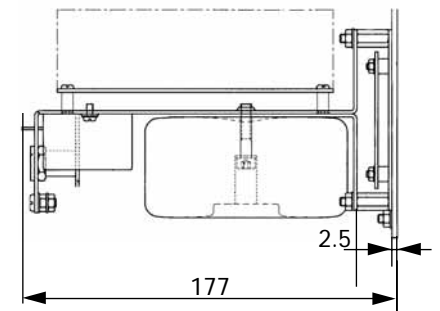


Control unit MCP-E / -Remote

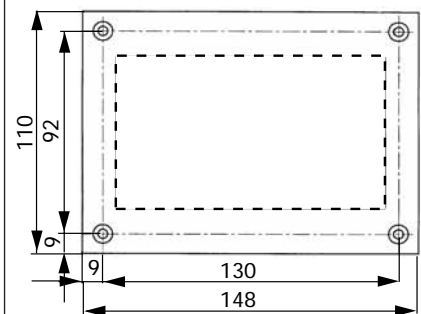
for DC motor with encoder Ecoline-E



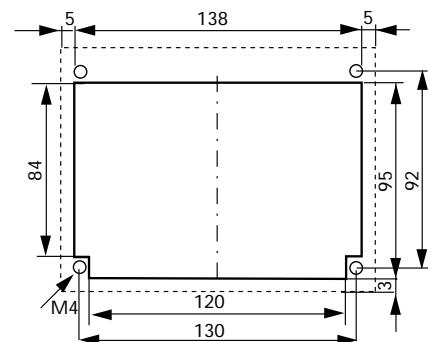
Side view (mm)



Front view (mm)



Mounting cut-out (mm)



⚠ IMPORTANT

Active cooling system

Adequate ventilation (active cooling) must be provided depending on the installation conditions and the operating time.

The buyer and user himself is responsible for sufficient ventilation of ISMATEC® panel-mounted pumps.

Technical specifications

Mains connection	230 V / 50 Hz or 115 V / 60 Hz (please indicate on your order)
Power consumption	max. 110 W
Weight	2.3 kg

Interfaces

- RS232 in
for operation controlling via PC
- RS232 out
for cascading up to 8 control units
- Analog input (Speed control)
0–5 or 0–10 V, 0–20 or 4–20 mA
- Analog output (Speed output)
0–10 V_{DC} or 0–12 kHz
- Digital input
start/stop, rotation direction, autostart

Operating panel

- LED display
- Membrane key-pad (7 keys) for:
Run/Stop, Up and Down (value setting),
rotation direction, calibration, operating
mode (MODE key), MAX/MIN Reset
- Memory:
4 sets of operating parameters can be stored
- Selectable operating modes:
 - Pumping by speed (rpm)
 - Pumping by flow rate (ml/min)
 - Dispensing by volume (ml)
 - Dispensing by time (0.1s to 999h)
 - Intermittent dispensing
(repetitive dispensing by volume or time
with pre-set pause time)
 - Pause time setting (from 0.1s to 999h)
 - Number of dispensing cycles
 - Roller back-steps for drip-free dispensing
 - Selectable tube sizes
- Calibration functions:
 - Flow rate (ml/min)
 - Dispensing volume (ml)

Ordering information

Model	MCP-E	MCP-E Remote
MCP-E	IS 2364	IS 2362
Included with delivery: data sheet for installation and electrical connections		

Data sheet

08.5
30.09.05