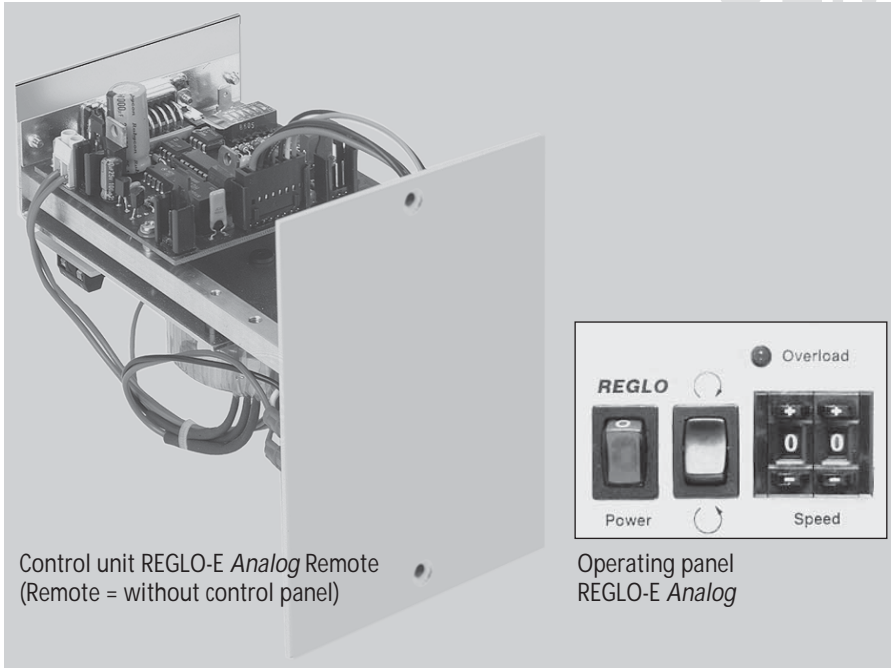
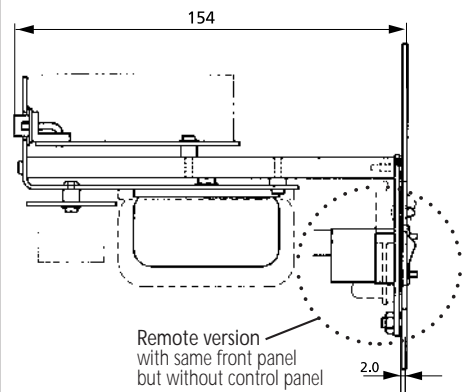


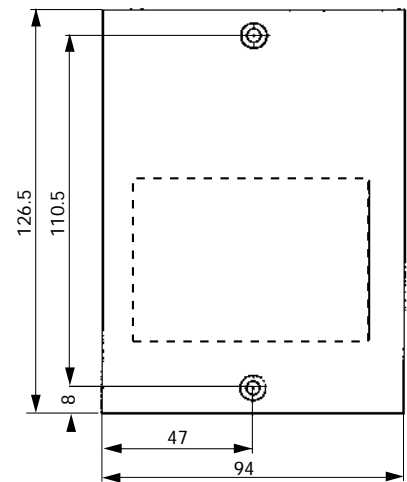
Control unit REGLO-E Analog /-Remote for DC motor with encoder



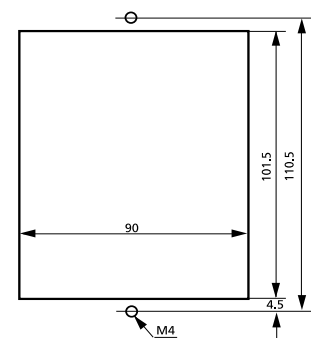
Side view (mm)



Front view (mm)



Mounting cut-out (mm)



Technical specifications

Mains connection	230 V / 50/60 Hz or 115 V / 50/60 Hz (please indicate on your order)
Power consumption	max. 20 W
Weight	0.700 kg

Interfaces

■ Analog input	
Speed control	0-5 V or 0-10 V, 0-20 mA or 4-20 mA
■ Analog output	
Speed output	0-8 kHz (1-2 channels) 0-5 kHz (3-5 channels)
■ Digital input (TTL-level)	
Start/Stop, rotation direction	

Operating panel

- On/Off switch
- Switch for rotation direction
- LED indicator for overload
- 2-digit potentiometer for digital speed setting in 1%-steps, 1-99 %

Ordering information

Model	REGLO-E Analog	REGLO-E Analog Remote
1-2 channels	IS 3186	IS 3269
3-5 channels	IS 3385	IS 3972

Please note

Included with delivery:
data sheet for installation and electrical connections

Data sheet
08.1
30.09.05