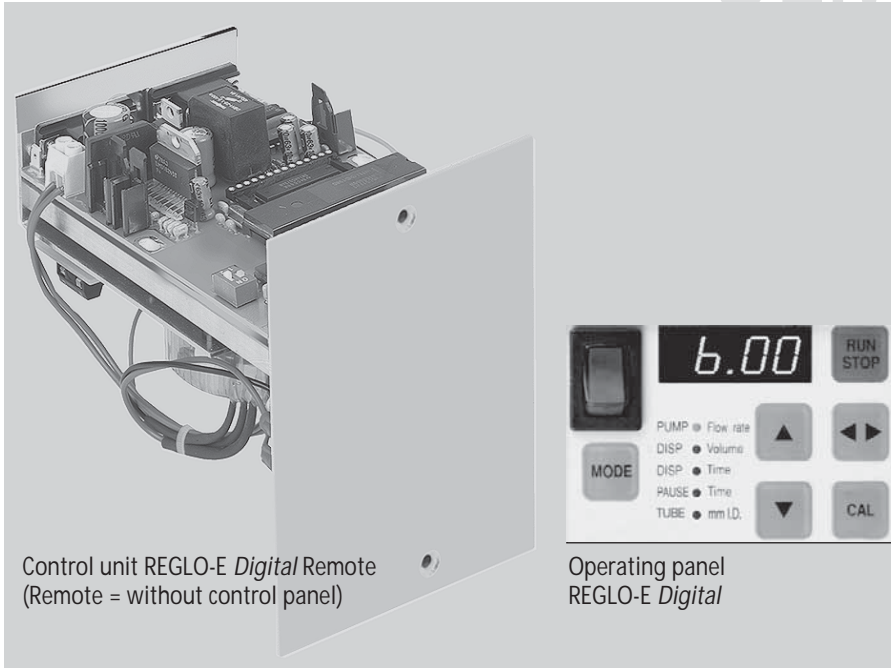
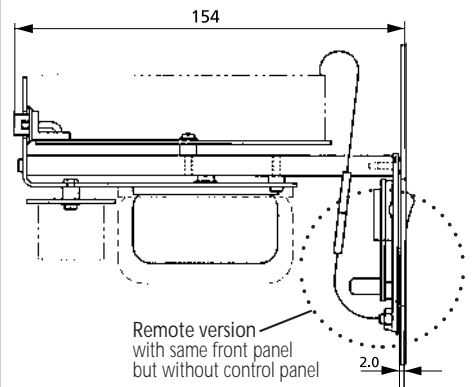


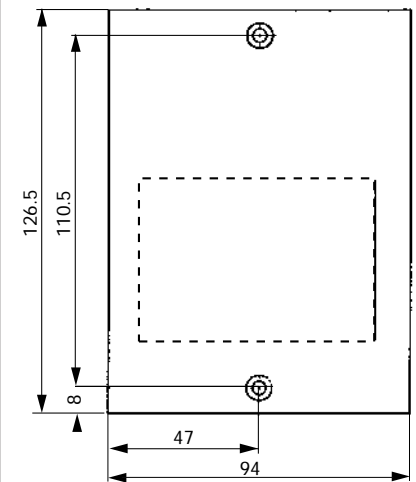
# Control unit REGLO-E *Digital I-Remote* for DC motor with encoder



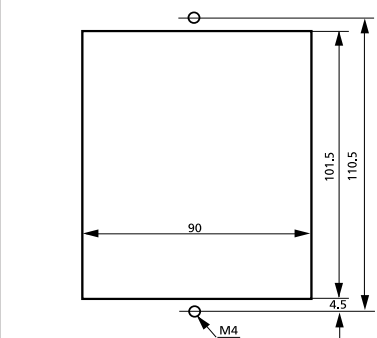
Side view (mm)



Front view (mm)



Mounting cut-out (mm)



Control unit REGLO-E *Digital Remote*  
(Remote = without control panel)

Operating panel  
REGLO-E *Digital*

## Technical specifications

|                   |   |
|-------------------|---|
| Mains connection  | 230 V / 50/60 Hz or<br>115 V / 50/60 Hz<br>(please indicate on<br>your order) |
| Power consumption | max. 20 W   |
| Weight            | 0.700 kg  |

## Interfaces

- RS232 in  
for controlling via PC
- RS232 out  
for cascading up to 8 control units
- Digital input (TTL-level)  
Start/Stop, Autostart
- Analog output
 

|              |  |
|--------------|--|
| Speed output | 0-8 kHz (1-2 channels) <sup>1)</sup><br>0-5 kHz (3-5 channels) |
|--------------|--|

<sup>1)</sup> Only for Remote Version: When ordering please state the number of channels required.

## Operating panel

- On/Off switch
- LED display
- Membrane key-pad (6 keys) for:  
Run/Stop, Up and Down (value setting),  
rotation direction, calibration, operating  
mode (MODE key)
- Selectable operating modes:
  - Pumping by speed (rpm)
  - Pumping by flow rate (ml/min)
  - Dispensing by volume (ml)
  - Intermittent dispensing  
(repetitive dispensing by volume with  
pre-set pause time)
  - Pause time setting (from 0.1s to 999h)
  - Roller back-steps for drip-free dispensing
  - selectable tube sizes
- Calibration functions:
  - Flow rate (ml/min)
  - Dispensing volume (ml)

## Ordering information

| Model        | REGLO-E <i>Digital</i> | REGLO-E <i>Digital Remote</i> |
|--------------|------------------------|-------------------------------|
| 1-5 channels | IS 3187                | IS 3257                       |

## Please note

Included with delivery:  
data sheet for installation and electrical  
connections

Data sheet  
08.2  
30.09.05