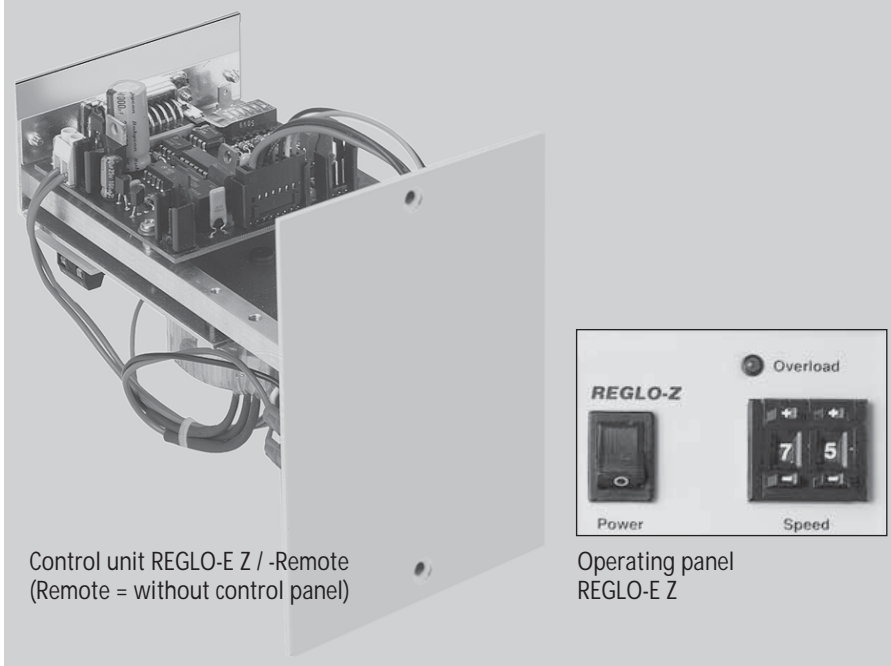


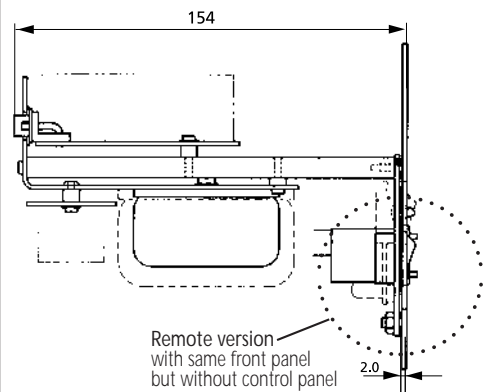
Control unit REGLO-E Z / -Remote

for DC motor with encoder

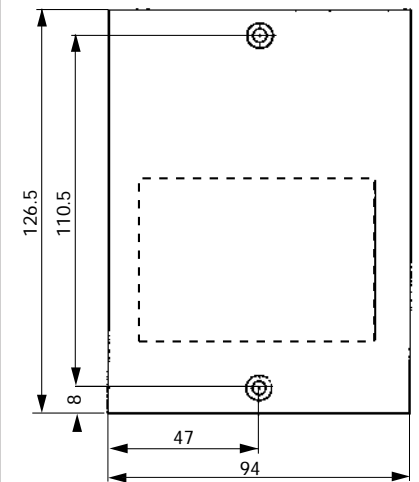
OEM



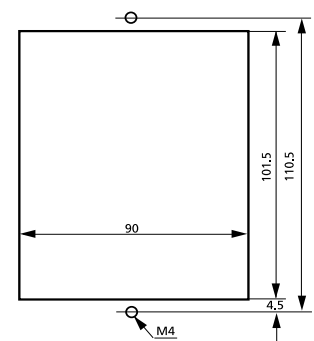
Side view (mm)



Front view (mm)



Mounting cut-out (mm)



Technical specifications

Mains connection	230 V / 50/60 Hz or 115 V / 50/60 Hz (please indicate on your order)
Power consumption	max. 50 W
Weight	0.700 kg

Interfaces

■ Analog input	
Speed control	0-5 V or 0-10 V, 0-20 mA or 4-20 mA
■ Analog output	
Speed output	0-10 kHz
■ Digital input (TTL-level)	
Start/Stop	

Operating panel

- On/Off switch
- LED indicator for overload
- 2-digit potentiometer for digital speed setting in 1 %-steps

Ordering information

Model	REGLO-E Z	REGLO-E Z Remote
	IS 3973	IS 4016

Please note

Included with delivery: data sheet for installation and electrical connections

Data sheet
088
30.09.05