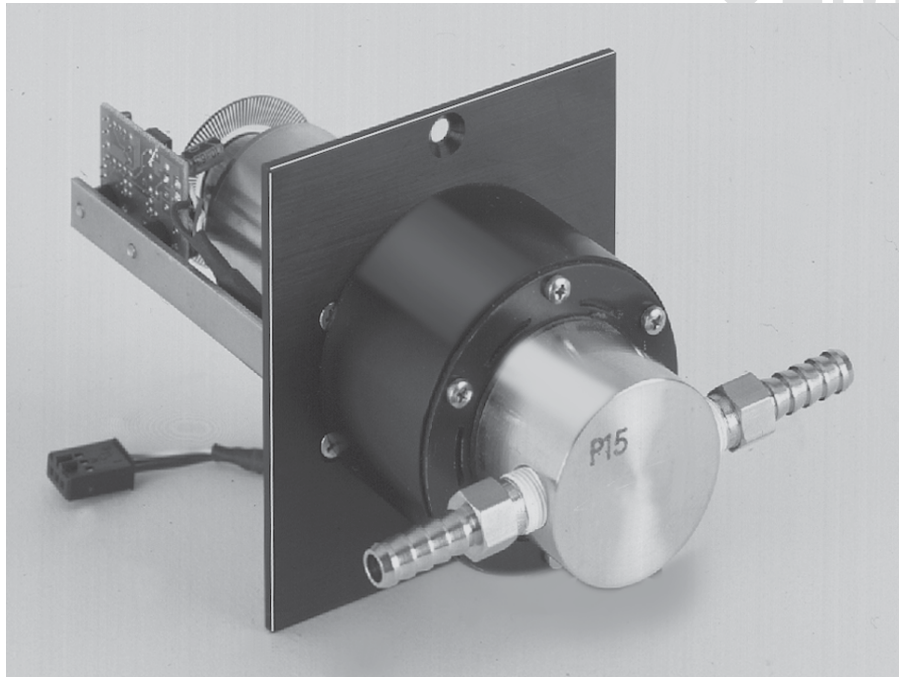
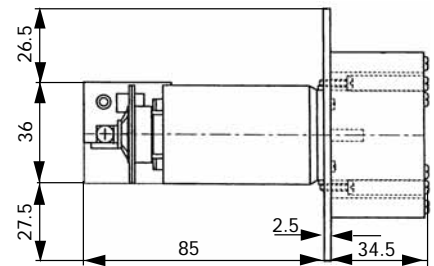


# DC-Motor mit optischem Encoder

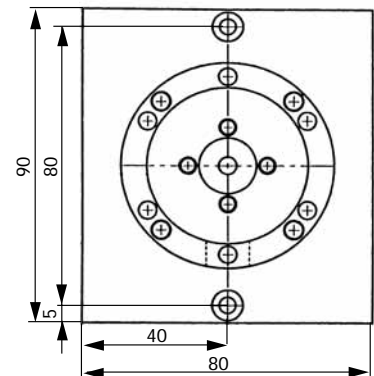
OEM



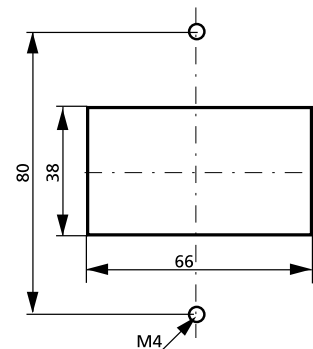
Seitenansicht (mm)



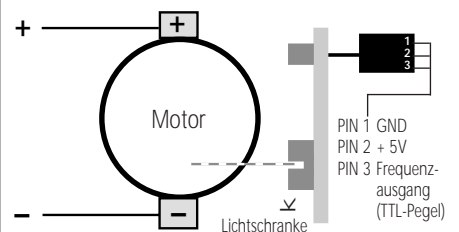
Frontansicht (mm)



Montageausschnitt (mm)



Schema und elektrische Anschlüsse



## Technical specifications

Pump model	REGLO-E Z
Motor type	DC motor with encoder
Rotation speed*	50-5000 rpm
Flow rates*	1-3290 ml/min
Motor control*	optional control unit
Power consumption	max. 35 W
Optical encoder	120 impulses/motor rev.
Channels	1
Weight	0.5 kg
* See 'Please note'	

Please ask for data sheets with an exact description of the gear pump-head.

## Flow rates<sup>1)</sup>

Pump head	ml per revolution	Differential pressure	Gear material
186	0.016	1.4 <sup>3)</sup>	Graphit
181	0.042	2.8 <sup>3)</sup>	Graphit
183	0.084	2.8 <sup>3)</sup>	Graphit
1830	0.093	5.2 <sup>3)</sup>	PPS or PEEK
120 <sup>2)</sup>	0.658	2.0 <sup>3)</sup>	PTFE or PEEK
130 <sup>2)</sup>	0.658	2.0 <sup>3)</sup>	PPS or PEEK
140	0.658	2.0 <sup>3)</sup>	PTFE or PEEK
150	0.658	2.0 <sup>3)</sup>	PPS or PEEK

<sup>1)</sup> Water, without differential pressure  
<sup>2)</sup> with bypass  
<sup>3)</sup> Other values possible on request.

System pressure: max. 21 bar

k Calculation example for flow rate  
 rpm x ml per revolution = ml/min  
 5000 x 0.658 = 3290

## Ordering information

Nominal voltage	Type REGLO-E Z	Order No.
12 V <sub>DC</sub>		IS 3666
24 V <sub>DC</sub>		IS 3666A
Gear pumphead, magnet and nipples are not included.		

\*

### Please note

Specifications valid for the following ISMATEC® control unit:

REGLO-E Z - see data sheet 08.8

Datenblatt

05.2  
30.09.05