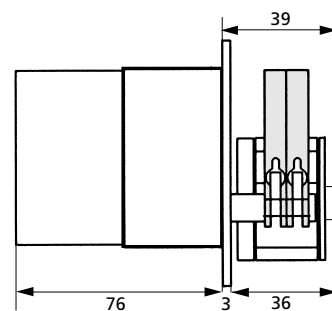


Synchronous motor with gear box

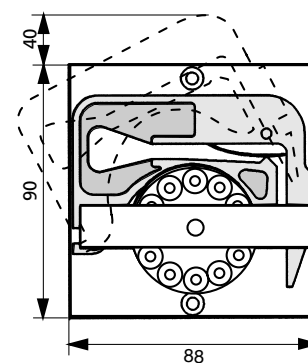
OEM



Side view (mm)



Front view (mm)



Mounting cut-out (mm)

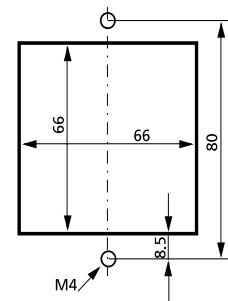
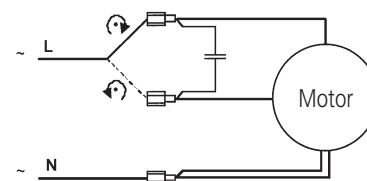


Diagram and electrical connections



The polarity of L and N has no effect on the rotation direction.

Technical specifications

Pump model	MS/CA2-E/12/Synchro
Motor type	Synchronous motor with reversible rotation
Rotation speed	fixed, available with: 6 8 10 12 20 40 60 (rpm)
Flow rates	0.006–14.4 ml/min
Power consumption	8 W
Channels	2
Pump rollers	12
Weight	0.960 kg
Tubing type	3-stop collared tubing
Tubing i.d.	0.13–3.17 mm
Cassettes	MS/CA Click'n'go, POM

Cassettes (Spare part / Option)

- IS 3510 MS/CA Click'n'go, **POM-C**²⁾
- IS 0649 MS/CA Pressure lever, **POM-C**
- IS 3629 MS/CA Pressure lever, **PVDF**

²⁾ Standard equipment

➔ Please see data sheet 09.1

Flow rates¹⁾

Tubing i.d. mm	ml per revolution	Tubing i.d. mm	ml per revolution
0.13	0.00093	1.14	0.067
0.19	0.0021	1.22	0.075
0.25	0.0038	1.30	0.083
0.38	0.0088	1.42	0.094
0.44	0.012	1.52	0.10
0.51	0.016	1.65	0.12
0.57	0.019	1.75	0.13
0.64	0.024	1.85	0.13
0.76	0.033	2.06	0.15
0.89	0.044	2.29	0.17
0.95	0.050	2.54	0.19
1.02	0.056	2.79	0.21
1.09	0.063	3.17	0.24

¹⁾ Water, Tygon® tubing, without differential pressure

➔ Calculation example for flow rate
rpm x ml per revolution = ml/min
60 x 0.24 = 14.4

Ask for the ISMATEC® Pump Tubing Selection Guide.

Ordering information

Voltage and frequency	Type MS/CA2-E/12/Synchro/. .							
	Revolutions per minute (rpm)	6	8	10	12	20	40	60
24 V _{AC} /50 Hz		2EB 028	2EB 029	2EB 030	2EB 031	2EB 032	2EB 033	2EB 034
24 V _{AC} /60 Hz		2EB 035	2EB 036	2EB 037	2EB 038	2EB 039	2EB 040	2EB 041
115 V _{AC} /50 Hz*								
115 V _{AC} /60 Hz		2EB 042	2EB 043	2EB 044	2EB 045	2EB 046	2EB 047	2EB 048
230 V _{AC} /50 Hz		2EB 049	2EB 050	2EB 051	2EB 052	2EB 053	2EB 054	2EB 055
230 V _{AC} /60 Hz*								

*on request

Data sheet

02.1.6

30.09.05