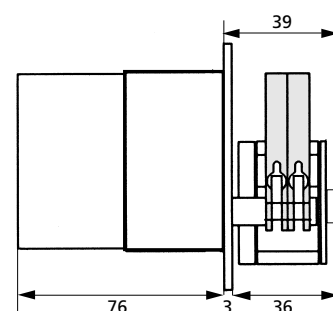


Synchronous motor with gear box

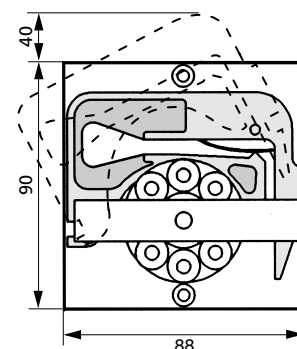
OEM



Side view (mm)



Front view (mm)



Mounting cut-out (mm)

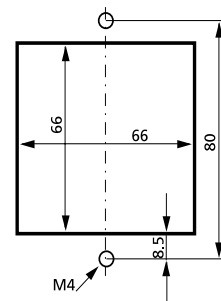
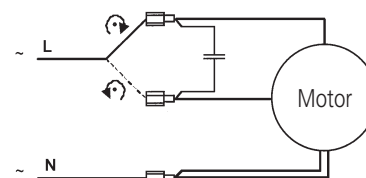


Diagram and electrical connections



The polarity of L and N has no effect on the rotation direction.

Technical specifications

Pump model	MS/CA2-E/08/Synchro
Motor type	Synchronous motor with reversible rotation
Rotation speed	fixed, available with: 6 8 10 12 20 40 60 (rpm)
Flow rates	0.007–21 ml/min
Power consumption	8 W
Channels	2
Pump rollers	8
Weight	0.960 kg
Tubing type	3-stop collared tubing
Tubing i.d.	0.13–3.17 mm
Cassettes	MS/CA Click'n'go, POM

Cassettes (Spare part / Option)

- IS 3510 MS/CA Click'n'go, POM-C²⁾
- IS 0649 MS/CA Pressure lever, POM-C
- IS 3629 MS/CA Pressure lever, PVDF

²⁾ Standard equipment

➔ Please see data sheet 09.1

Flow rates¹⁾

Tubing i.d. mm	ml per revolution	Tubing i.d. mm	ml per revolution
0.13	0.0011	1.14	0.078
0.19	0.0023	1.22	0.088
0.25	0.0041	1.30	0.098
0.38	0.0094	1.42	0.11
0.44	0.013	1.52	0.13
0.51	0.017	1.65	0.15
0.57	0.021	1.75	0.16
0.64	0.026	1.85	0.17
0.76	0.036	2.06	0.20
0.89	0.049	2.29	0.24
0.95	0.056	2.54	0.27
1.02	0.063	2.79	0.31
1.09	0.072	3.17	0.35

¹⁾ Water, Tygon® tubing, without differential pressure

➔ Calculation example for flow rate
rpm x ml per revolution = ml/min
60 x 0.35 = 21

Ask for the ISMATEC® Pump Tubing Selection Guide.

Ordering information

Voltage and frequency	Type MS/CA2-E/08/Synchro/. .								
	Revolutions per minute (rpm)		6	8	10	12	20	40	60
24 V _{AC} /50 Hz			ISM 037	2EB 017	2EB 018	2EB 019	ISM 136	ISM138	ISM 140
24 V _{AC} /60 Hz			2EB 020	2EB 021	2EB 022	2EB 023	ISM 379	ISM 380	ISM 381
115 V _{AC} /50 Hz*			ISM 608						
115 V _{AC} /60 Hz			ISM 036	ISM 634	2EB 024	2EB 025	ISM 203	ISM 466	ISM 467
230 V _{AC} /50 Hz			ISM 035	ISM 633	2EB 026	2EB 027	ISM 047	ISM 048	ISM 049
230 V _{AC} /60 Hz*			ISM 637						

* on request