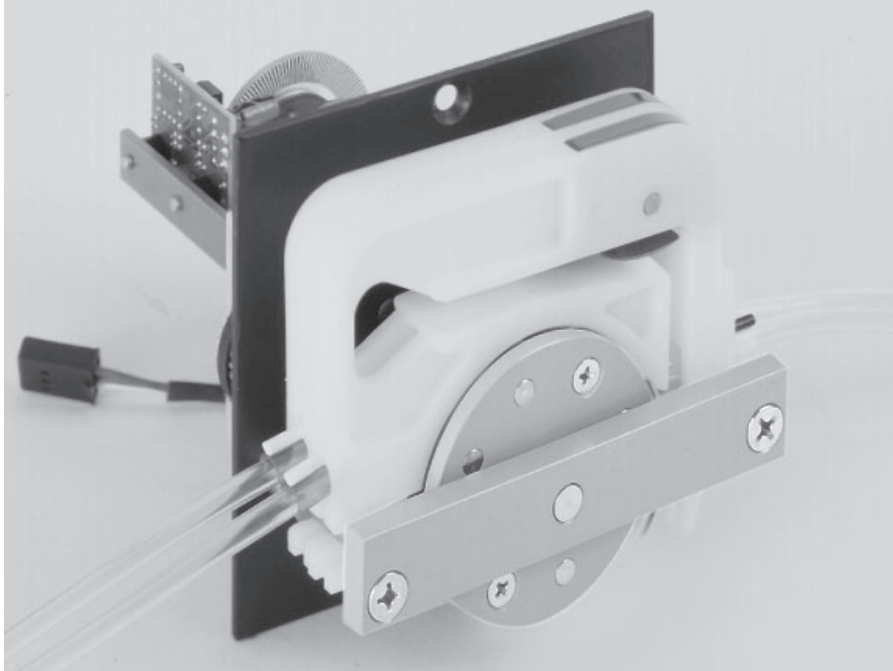
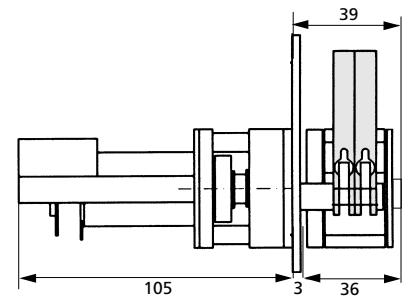


DC motor with optical encoder and gear box

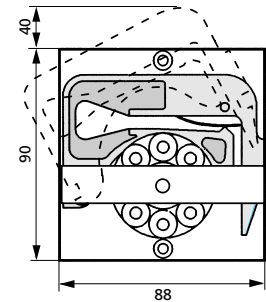
OEM



Side view (mm)



Front view (mm)



Mounting cut-out (mm)

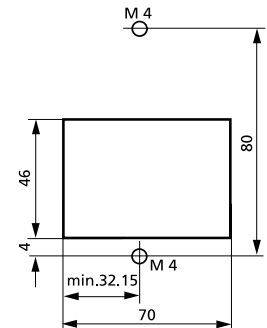
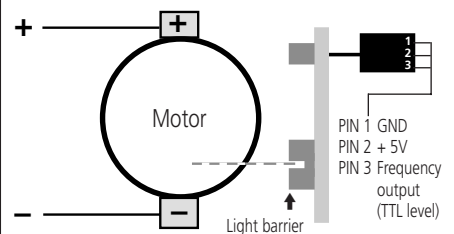


Diagram and electrical connections



Technical specifications	
Pump model	REGLO-E MS/CA2-08
Motor type	DC motor with encoder
Gear ratio	25:1
Rotation speed*	3.2–160 rpm ^{a)} 1.6–160 rpm ^{b)}
Flow rates*	0.002–56 ml/min
Motor control*	optional control unit
Power consumption	max. 10 W
Optical encoder	120 impulses/motor rev.
Channels	2
Pump rollers	8
Weight	0.620 kg
Tubing type	3-stop collared tubing
Tubing i.d.	0.13–3.17 mm
Cassettes	MS/CA Click'n'go, POM
Cassettes (Spare part / Option)	
IS 3510	MS/CA Click'n'go, POM-C ²⁾
IS 0649	MS/CA Pressure lever, POM-C
IS 3629	MS/CA Pressure lever, PVDF
²⁾ Standard equipment → Please see data sheet 09.1	

Flow rates ¹⁾			
Tubing i.d. mm	ml per revolution	Tubing i.d. mm	ml per revolution
0.13	0.0011	1.14	0.078
0.19	0.0023	1.22	0.088
0.25	0.0041	1.30	0.098
0.38	0.0094	1.42	0.11
0.44	0.013	1.52	0.13
0.51	0.017	1.65	0.15
0.57	0.021	1.75	0.16
0.64	0.026	1.85	0.17
0.76	0.036	2.06	0.20
0.89	0.049	2.29	0.24
0.95	0.056	2.54	0.27
1.02	0.063	2.79	0.31
1.09	0.072	3.17	0.35

¹⁾ Water, Tygon® tubing, without differential pressure

→ Calculation example for flow rate

rpm x ml per revolution = ml/min

160 x 0.35 = 56

Ask for the ISMATEC® Pump Tubing Selection Guide.

Ordering information

Data sheet	Nominal voltage	Type REGLO-E MS/CA2-08	Order No.
	02.3.8 30.09.05	12 V _{DC}	

*** Please note**

Specifications valid for the following ISMATEC® control units:

^{a)} REGLO-E Analog - see data sheet 08.1
^{b)} REGLO-E Digital - see data sheet 08.2